



CCAMLR

COMM CIRC 13/30
SC CIRC 13/19

среда, 27 февраля 2013

Исследовательский промысел на Участке 58.4.1 SSRU C - дополнительная информация, представленная Республикой Корея

ВСЕМ ЧЛЕНАМ КОМИССИИ И НАУЧНОГО КОМИТЕТА

Республика Корея представила прилагаемую информацию для распространения ее среди всех членов Комиссии и Научного комитета.

Андрю Райт
Исполнительный секретарь

Прилож.

Телефон: +61 3 6210 1111
Факс: +61 3 6224 8744
email: ccamlr@ccamlr.org
Web: ccamlr.org

PO Box 213, North Hobart, Tasmania 7002 Australia
181 Macquarie Street, Hobart, Tasmania 7000 Australia



Ministry For Food, Agriculture, Forestry & Fisheries
Government Complex Sejong Bldg. #5, Room 303
94, Dasom2-Ro, Sejong-city, 339-012
Republic of Korea
Tel: 82 44 201 2839 Fax: 82 44 868 0845 <http://www.mifaff.go.kr>

February 26, 2013

Mr. Andrew Wright
Commission for the Conservation of Antarctic Marine Living Resources
Po Box 213, North Hobart 7002, Tasmania, Australia
(Phone) +61-3-6210-1111
(Fax) +61-3-6224-8744

Dear Andrew Wright,

I'm writing to follow up to the letter dated on February 26, 2013. (Comm Circular No. 13/28)

The F/V NO3 INSUNG, which applied to participate in CCAMLR's scientific research activities during the 2012/2013 seasons pursuant to CM 41-11(2012), arrived at Subarea 58.4.1C-b (3rd point of research) at UTC 11:40 on February 19, 2013. Again, the vessel could not proceed to the area (0-1,000 meters, 1,000-2,000 meters and 2,000-meter range) due to massive iceberg and thick floating ice. However, under the given conditions, the vessel tried to find researchable areas to the extent possible and made 5 research sets (Trot + Spanish) in a 2,000-meter range and 1,800-2,000 meter range and caught two(2) toothfish.

Considering the harsh weather conditions, floating ice, the safety of the crew and the limited amount of fuel and food, it would be very difficult for the vessel to stay in Division 58.4.1C-b. And thus, I notify the Secretariat that the vessel is going to move to the last point of research, Division 58.4.1C-a.

For your reference, I have attached the photo of floating sea ice in Division 58.4.1C-b.

It would be appreciated if you could circulate this letter to all Members of the Commission.

H. Kwon

Hyunwook Kwon
Korea's Representative to CCAMLR
Deputy Director of the International Organization Division
of the Distant Water Fisheries Bureau
the Ministry for Food, Agriculture, Forestry and Fisheries of Korea

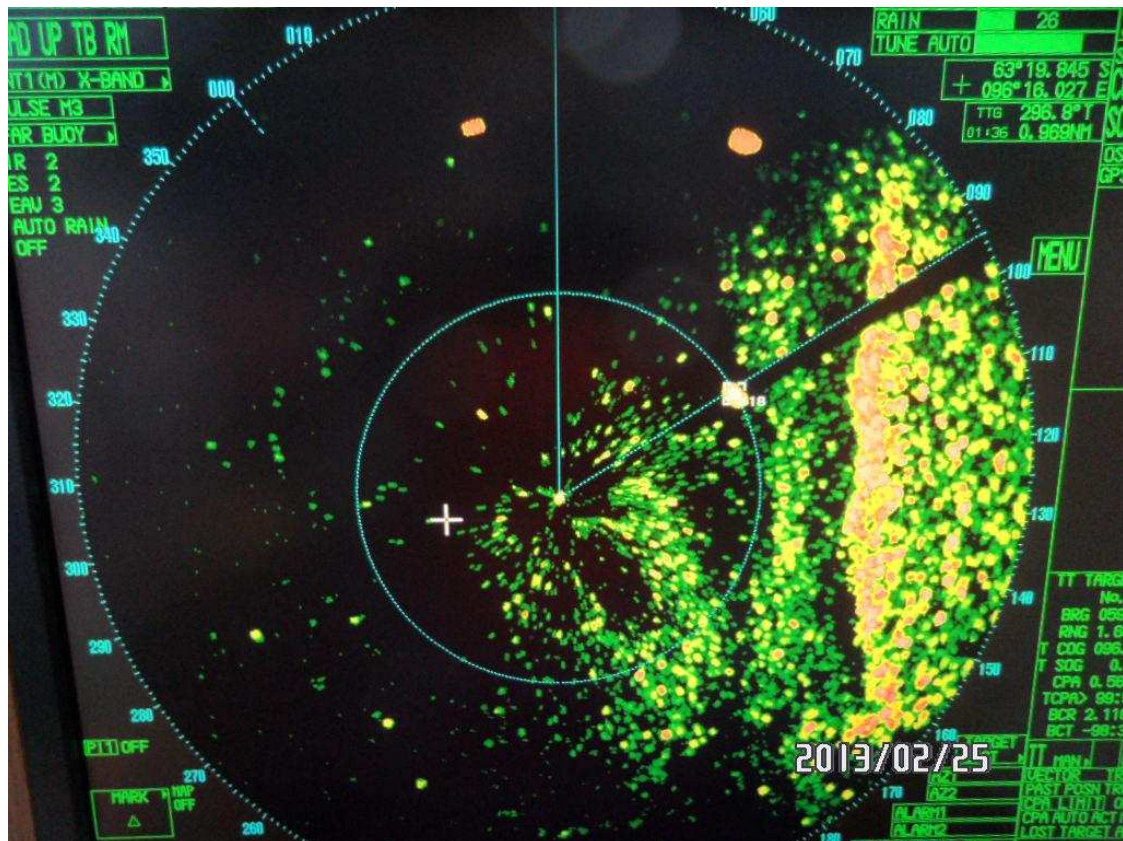
Attachment : Relevant evidence photos

Attachment 1 : Condition for floating ice





Attachment 2 : iceberg condition display from RADAR



Attachment 3 : Iceberg chart

