



CCAMLR

COMM CIRC 13/24
SC CIRC 13/14

Friday, 8 February 2013

Research fishing in Division 58.4.1 SSRU E research block B - information submitted by the Republic of Korea

TO ALL MEMBERS OF THE COMMISSION AND THE SCIENTIFIC COMMITTEE


The Republic of Korea has provided the attached letter for circulation to all Members of the Commission.

Andrew Wright
Executive Secretary

Attch.

Telephone: +61 3 6210 1111
Fax: +61 3 6224 8744
Email: ccamlr@ccamlr.org
Web: ccamlr.org

PO Box 213, North Hobart, Tasmania 7002 Australia
181 Macquarie Street, Hobart, Tasmania 7000 Australia



Ministry For Food, Agriculture, Forestry & Fisheries
Government Complex Sejong Bldg. #5, Room 303
94, Dasom2-Ro, Sejong-city, 339-012
Republic of Korea
Tel: 82 44 201 2839 Fax: 82 44 868 0845 <http://www.mifaff.go.kr>

February 7, 2013

Mr. Andrew Wright
Commission for the Conservation of Antarctic Marine Living Resources
Po Box 213, North Hobart 7002, Tasmania, Australia
(Phone) +61-3-6210-1111
(Fax) +61-3-6224-8744

Dear Andrew Wright,

The *F/V NO3 INSUNG*, which applied to participate in CCAMLR's scientific research activities during the 2012/2013 seasons pursuant to CM 41-11(2012), arrived at Subarea 58.4.1E-b (1st point of research) at UTC 07:21 on February 4, 2013. However, it was not able to advance its activities due to harsh conditions such as massive iceberg, thick floating ice and heavy fog in researchable areas.

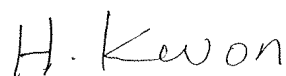
Under the current harsh conditions, and given the fact that its intended scientific research requires the vessel to stay in Subarea 58.4.1E-b for an extended period of time, it would be very difficult for the vessel to continue its scientific activities especially when only a limited amount of fuel and food is available to the crew on board.

If the vessel attempts to advance to the designated area nonetheless, it would have to stand a risk of being isolated, which will affect the safety of the vessel and its crew.

As such, I would like to inform that the *F/V NO3 INSUNG* is planning to move to its next point of research (Subarea 58.4.1 E-a) to continue its scientific research.

To verify the vessel's hardship, the Korean government requested the vessel to provide radar information, relevant photo evidence and the picture of floating ice. This supporting evidence has been attached to this letter for your reference.

It would be appreciated if you could circulate this letter to all Members of the Commission.



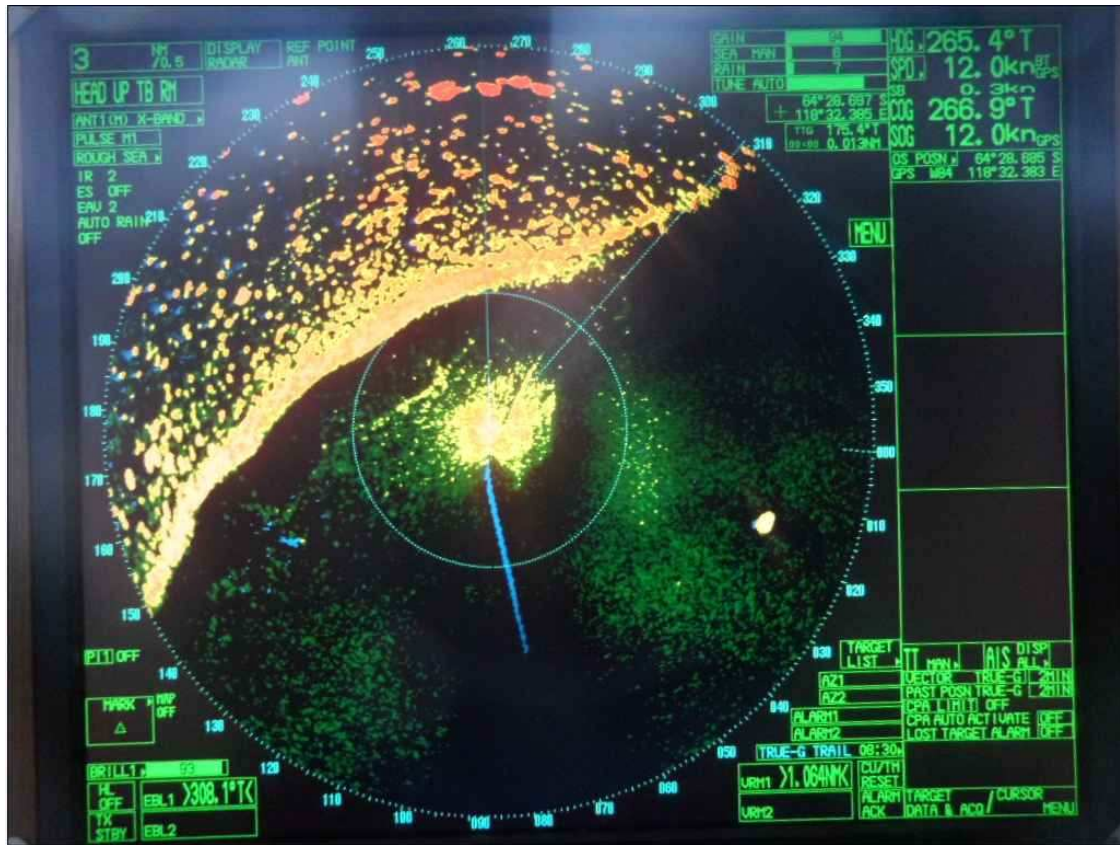
Hyunwook Kwon
Korea's Representative to CCAMLR
Deputy Director of the International Organization Division
of the Distant Water Fisheries Bureau
the Ministry for Food, Agriculture, Forestry and Fisheries of Korea

Attachment : Relevant evidence photos

Attachment 1 : Condition for floating ice and heavy fog



Attachment 2 : iceberg condition display from RADAR



Attachment 3 : Depth display from TURBO WIN



Attachment 4 : Iceberg chart

